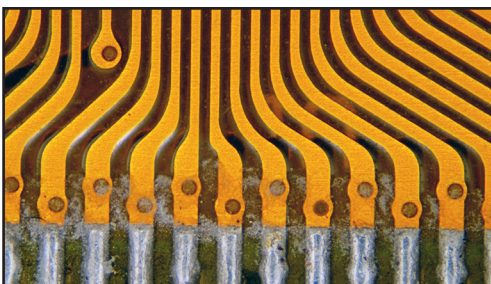
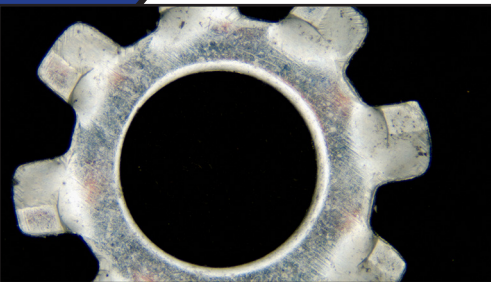


DeltaPix **H4KFW08DPXII**

Multi Interface Microscope Camera

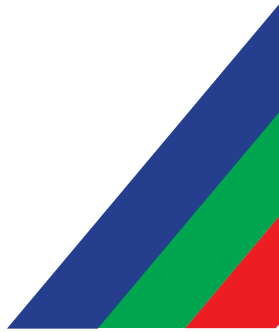


NEW



- 4K resolution
- On screen measurement
- NEW Auto measurement
- NEW Built-in Extended focus
- HDMI , USB ang GE

H4KFW08DPXII Camera



DeltaPix H4KFW08DPXII Premium Microscope Camera.

The H4KFW08DPXII produces high-resolution images with vibrant natural colors suited also for critical applications like Pathology. It has a state-of-the-art built-in measurement software with auto edge detection and extended focus with no need for a computer.

With the H4KFW08DPXII users can enjoy fast, comfortable, and user-friendly on-screen operation – improving sample evaluation, and measurement, facilitating effective collaborations, and documentation in high resolution.

For more advanced applications the user has the option to connect the camera to a PC via USB 3.0 or GE, and use DeltaPix InSight to make further analysis.

High-quality, cost-effective and flexible

The DeltaPix H4KFW08DPXII microscope camera has C-mount interface making it easily and cost-effectively fitted on most standard microscopes. Additionally, it has multiple interfaces providing unmatched versatility for any use case.

User-friendly Camera

Plug and play – the HDMI interface provides high speed and ease of installation on any 4K monitor with HDMI input. No need for computer, because the H4KFW08DPXII microscope camera has built-in software. Optionally, the camera can be used with PC software.

Applications

The H4KFW08DPXII camera provides multiple connection options making it versatile and suitable for many applications.

Typical applications:

- Documentation and publishing
- Material science
- Metrology
- Quality control
- Dark Field
- Bright Field
- Fluorescence
- Semiconductor inspection
- Pathology
- Digital Classroom

Camera Dimensions



Built-in advanced software

The H4KFW08DPXI has built-in software that provides the operator with advanced imaging and measuring tools. This software includes features such as auto edge detection, extended focus, and geometric measurement tools.

Onboard measurement tools:

- Angle
- 4 Points Angle
- Point (Point Counter)
- Arbitrary Line
- 3 Points Line
- Horizontal Line
- Vertical Line
- 3 Points Vertical Line
- Parallel
- Rectangle
- 3 Points Rectangle
- Ellipse
- 5 Points Ellipse
- Circle
- 3 Points Circle
- Annulus
- 3 Points Annulus
- Two Circles and its Center Distance
- 3 Points Two Circles and its Center Distance

- Arc

- Polygon

- Curve

- Scale Bar

- Arrow

Auto Measurement

- Two Points Distance

- Circle Detect

- Annulus Detect

- Rectangle Detect



DeltaPix InSight Software

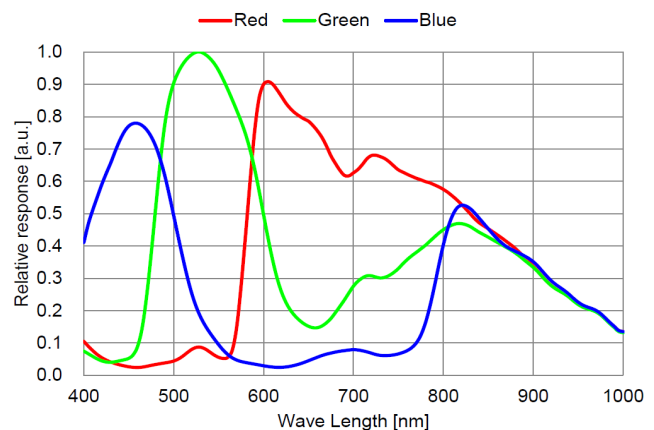
The H4KFW08DPXII camera Includes DeltaPix InSight Basic software which is a powerful platform for camera control, precise measurements, and analysis. DeltaPix InSight allows expansion with a multitude choice of optional modules, for a wide range of advanced applications with an easy-to-use user interface. Available functions in the optional modules are for example extended focus, HDR for wide dynamic images, 3D measurements/ 3D topography, Roughness measurement, stitching including 3D stitching, Object Counting, and much more.

Technical Highlight

- 1/1.8" Sony sensor
- 8.3 Megapixels (4K)
- Up to 60 FPS in HDMI
- Ultra high sensitivity
- Built-in advanced measuring software

Spectral Sensitivity

(Excludes lens characteristics and light source characteristics.)



Specifications

| H4KFW08DPXII camera | |
|-----------------------------|---------------------------------------------------------------------------------------------------------------------------|
| Camera model | H4KFW08DPXII |
| Live preview resolution | 3840 x 2160 @60FPS (HDMI) 4K 1920 x 1080 @60FPS (HDMI) 3840 x 2160 @30FPS (USB 3.0) 4K 3840 x 2160 @30FPS (WiFi) |
| Video Record | 4K (8.3MP 3840x2160) |
| Still image resolution | 8.3Mpixels (3840x2160) |
| Sensor size | 1/1.8" Sony back illuminated Exmor sensors 7.68mm x 4.32mm |
| Pixel size | 2µm x 2µm |
| Exposure size | 0.04ms~1000ms |
| Gain | 0dB to 30 dB |
| Sensitivity | 1364 mv with 1/30s 0.1 mv with 1/30s |
| Shutter | Rolling |
| Lens Mount | C-Mount |
| White balance | Automatic or Manual |
| Data interface | HDM 2.0, USB 3.0, and GE |
| Software | Built-in, UI in English /Chinese / Korean / Thai / French / German / Japanese / Italian InSight Basic (Included) |
| Data format and compression | Still image, JPEG or Tiff H264 encoded video |
| Minimum requirements | 4K/Full HD monitor with HDMI input |
| Accessories | Mouse,32GB memory key 12V power supply. |
| Power | 12V |
| Dimension | 100 x 75 x 54mm |
| Weight | |

05/2024

Head Quarter & Sales

Hassellunden 16
DK 2765 Smorum, Denmark

 +45 4676 0205

 info@deltapix.dk