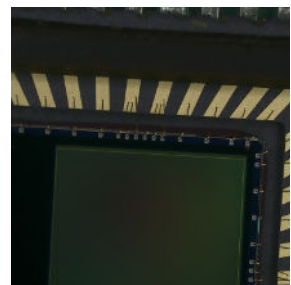
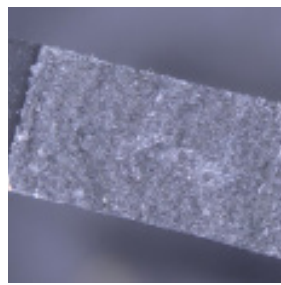
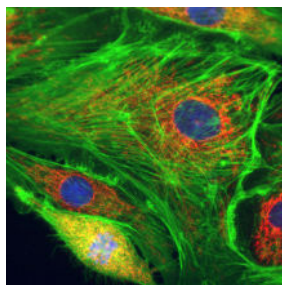
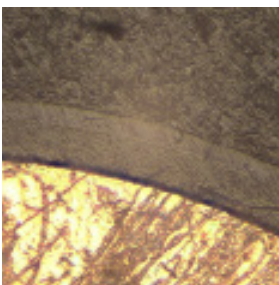


HDMI DPX

Microscope cameras



- Cost effective
- Crisp colors
- High-speed live video
- High-quality Sony sensor

HDMI DPX Cameras

DeltaPix HDMI Microscope Camera Series

Discover the DeltaPix HDMI DPX camera series, designed to provide you with fast and precise high-resolution live video streaming and exceptional still images. These cameras offer a user-friendly setup for everyday use, all at an outstanding price-to-performance ratio. The HDMI DPX microscope series offers three different models, Full HD camera, 4K camera with large sensor format and a Full HD camera with autofocus.

High-quality, cost-effective and flexible

The HDMI DPX microscope camera series has C-mount interface making it easily and cost-efficiently fit on most standard microscopes.

User-friendly Camera

Plug and play – the HDMI interface provides high speed and ease of installation on HDMI monitor.

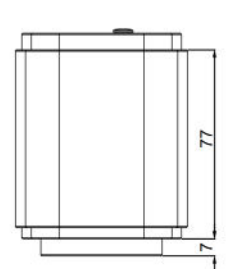
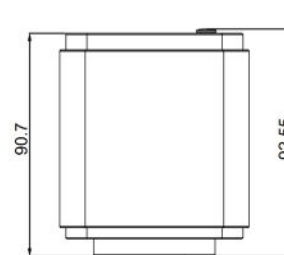
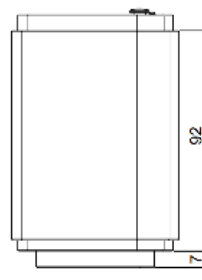
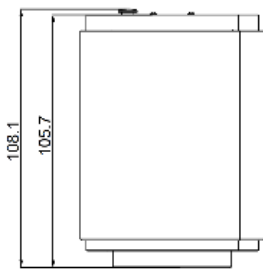
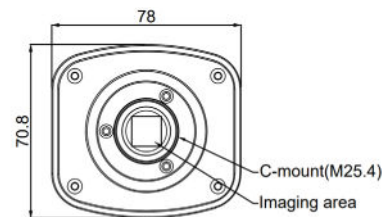
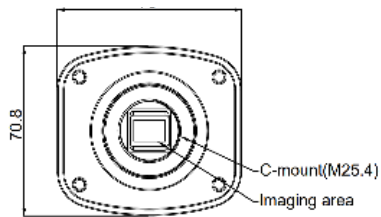
Applications

The HDMI DPX camera series come in 3 different models making this series versatile and suitable for many applications.

Typical applications:

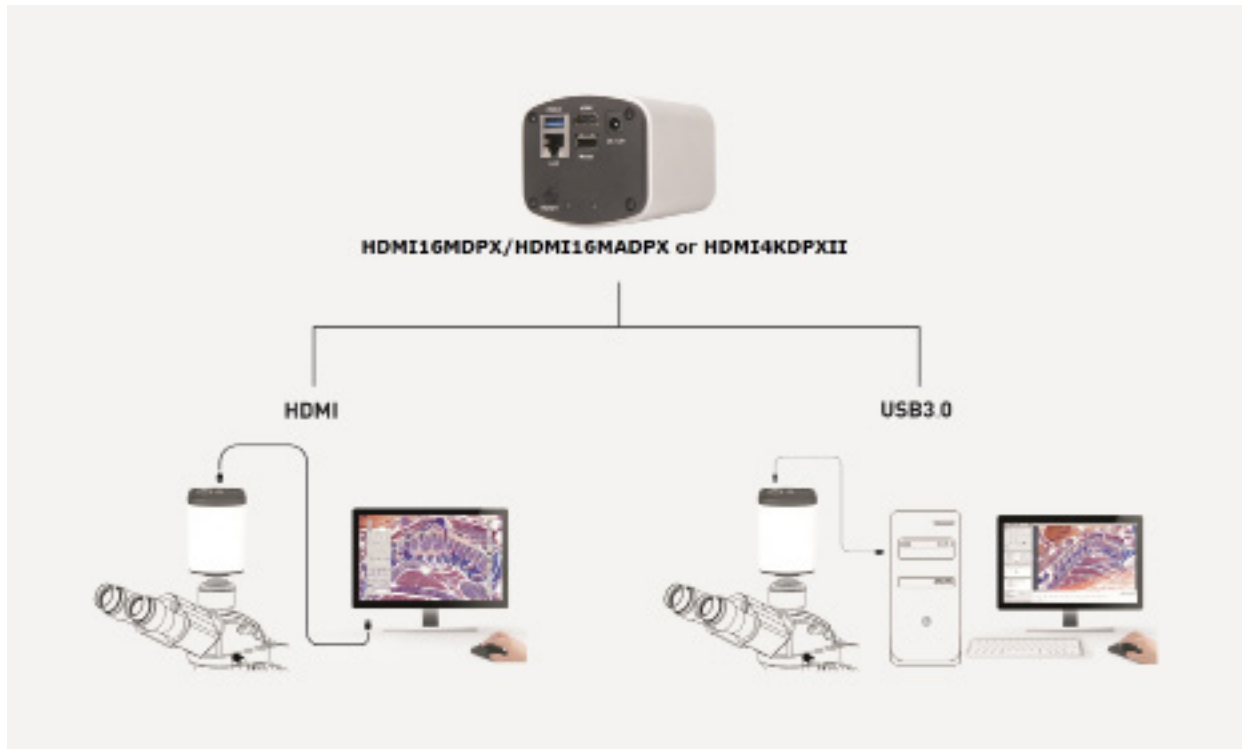
- Material science
- Metrology
- Dark Field
- Bright Field
- Fluorescence
- Cytology
- Biology

Camera Dimensions



HDMI4KDPXII

HDMI16MDPX/HDMI16MADPX



Technical Highlight HDMI16MDPX:

- 1/2.8" Sony sensor
- 6 Megapixels still images
- Up to 30 FPS in full resolution
- Ultra-light sensitive

Technical Highlight HDMI16MADPX:

- 1/2.8" Sony sensor
- 6 Megapixels still images
- Up to 30 FPS in full resolution
- Ultra-light sensitive
- Autofocus

DeltaPix InSight Software

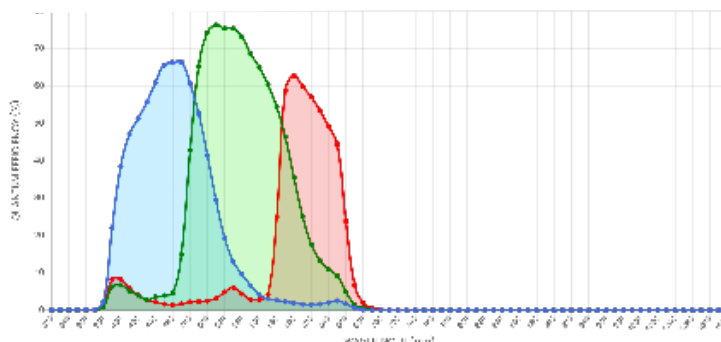
All Invenio EIII cameras include DeltaPix InSight Basic software which is a powerful platform for camera control, precise measurements, and analyses. DeltaPix InSight allows expansion with a multitude of optional modules, for a wide range of advanced applications with an easy-to-use user interface. Available functions in the optional modules are for example extended focus, HDR for wide dynamic images, 3D measurements/ 3D topography, Roughness measurement, stitching, Object Counting, and much more.

Technical Highlight HDMI4KDPXII:

- 1/1.2" Sony sensor
- 8.3 Megapixels
- Up to 30 FPS in full resolution
- Ultra-light sensitive

Spectral Sensitivity

HDMI DPX color



Specifications

HDMI DPX cameras			
Camera model	HDMI16MDPX	HDMI16MADPX	HDMI4KDPXII
Live preview resolution	30 fps @1920 x 1080 USB 2.0 30 fps @1920 x 1080 HDMI	30 fps @1920x1080 USB 2.0 30 fps @1920 x 1080 HDMI	3840 x 2160 @30FPS (HDMI) 3840 x 2160 @20FPS (USB 3.0) 3840 x 2160 @30FPS (GE)
Still image resolution	6 Mpixels (3264x1840)	6 Mpixels (3264x1840)	8.3Mpixels (3840x2160)
Sensor size	1/2.8" Sony Exmor 5.6mm x 3.1mm	1/2.8" Sony Exmor 5.6mm x 3.1mm	1/1.2" Sony Exmor 11.1mm x 6.3mm
Pixel size	2.9 µm x 2.9 µm	2.9 µm x 2.9 µm	2.9µm x 2.9µm
Exposure size	Automatic or Manual 1ms - 10S		
Sensitivity	1300mv with 1/30s	1300mv with 1/30s	2188mv with 1/30s 0.13mv with 1/30s
Auto focus	NO	Yes	NO
Shutter	Electronic rolling shutter		
Lens Mount	C		
White balance	Automatic, manual		
Data interface	HDMI/USB2.0	HDMI/USB2.0	HDMI/USB3.0
Software	DeltaPix InSight Basic Not included (Optional)		
Data format and compression	24-bit uncompressed Tiff, 24bit JPEG compressed and 24-bit loss-less compressed JPEG2000		
Minimum PC requirements	Intel i5 9 th gen or newer CPU 16 GB RAM 250 GB SSD drive USB 3.0 port Windows 10 and 11 DeltaPix InSight works with Windows 64Bits A high-resolution monitor		
Power	12V		
Dimension	90.7mm x 78mm x 70.8mm		105.7mm x 78mm x 70.8mm
Weight	265g	265g	505g

10/2023

Head Quarter & Sales

Hassellunden 16
DK 2765 Smorum, Denmark

+45 4676 0205
info@deltapix.dk

Development

Jacob Petersens Vej 11
DK 9240 Nibe, Denmark

+45 4676 0205
info@deltapix.dk